

Access Guide

Business School



Business School

Manchester Metropolitan University
All Saints Campus, Oxford Road
Manchester
M15 6BH



Proud to Promote Equality and Value Diversity

Manchester Metropolitan University is one of the UK's largest and most popular universities. We work hard to embed equality and fairness into everything we do. We are a Disability Confident Employer and the University has achieved a Gold award from the Business Disability Forum 'Disability Standard'.

Visitor safety and enjoyment is important to us. We provide accessible venues and there is accessible parking close to our buildings. There are a variety of catering options available for visitors with specific dietary requirements, and in recognition of our work around allergy awareness, we have Allergy Accreditation certification. We are able to offer hearing loop facilities in many of our lecture theatres, have accessible bedrooms in our residences and have overnight provision with a range of access options.

We hope to offer an inclusive experience for everybody and carry out reviews and risk assessments to ensure we maintain high standards. If you have any special requirements, require any particular reasonable adjustments or have any questions, please contact us and we will discuss how we can help make your visit an enjoyable one.



Travel options to the Business School

The Business School is situated just off Oxford Road on the Manchester Campus (All Saints).

The closest railway station is Manchester Oxford Road, which is 0.3 miles away. Manchester Piccadilly Railway Station is 0.9 miles away and Manchester Victoria is 2 miles. The Business School is also 8 miles away from Manchester Airport.

Taxis

Taxis can be pre-booked through Radio Cars, who also have wheelchair accessible taxis. Their contact number is 0161 236 8033. There are taxi ranks outside each railway station and the nearest drop off point at the Business School is either Ormond Street or Cambridge Street, close to the Business School entrance. Sat Nav postcode: M15 6FH

Car parking

The nearest car park to the Business School is the John Dalton car park underneath the Mancunian Way. The carpark is accessible from Chester Street and is located close to the back entrance of the Business School.

There are 12 designated parking spaces. The spaces are clearly marked and have sufficient width to allow wheelchair users to get in and out of their vehicles.

All of the John Dalton car park is on one level smooth surface on the ground floor.



Entering the Business School:

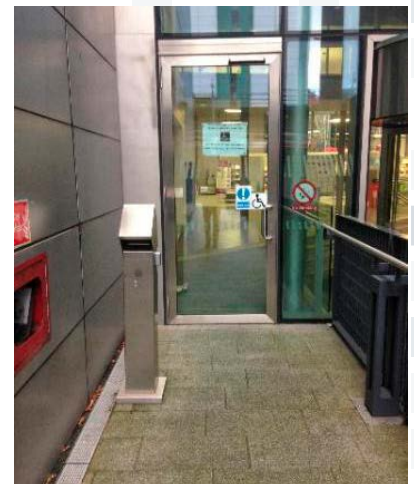
Front entrance

The front entrance of the Business School has an automatic swing door on the ground floor and is operated by a push button. Should you require any assistance, there is an intercom system that will alert the reception staff who can help you gain access to the building.



Rear entrance

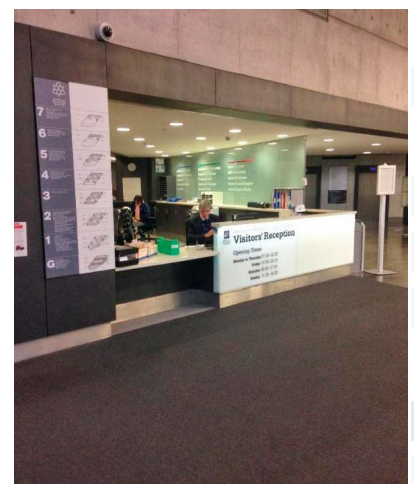
The rear entrance is accessible via the John Dalton car park, where there is a ramp leading to the raised ground floor section of the Business School. Once inside the Business School there is a ramp down to the ground level where you can access the reception, lifts and meeting rooms.



Inside the Business School:

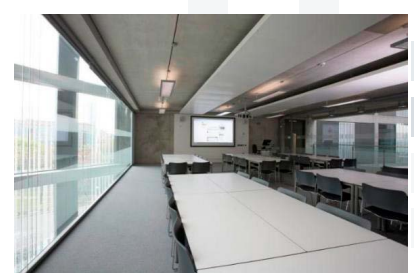
Reception

The Business School reception is located on the ground floor opposite the front entrance. The desk is easily accessible for wheelchair users and remains open until the building closes each day.



Meeting rooms and lecture theatres

All of the lecture theatres in the Business School are accessible for wheelchair users and have hearing loop facilities installed. There are large projector screens with additional LCD screens on either side.



The tiered lecture theatres contain space at the front of the theatre for wheelchair users and the lighting in each room can be easily adjusted using the facilities on each desk at the front of the lecture theatres.

Smaller meeting rooms are located on the upper floors of the Business School but are easily accessible by lifts, located in both the North and South atria of the building.

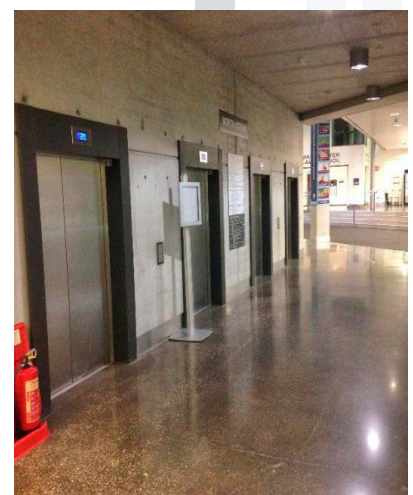
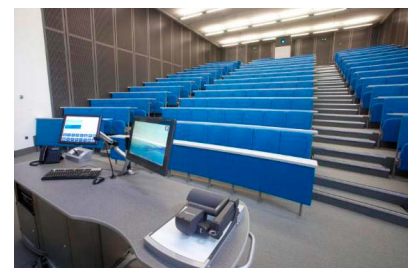
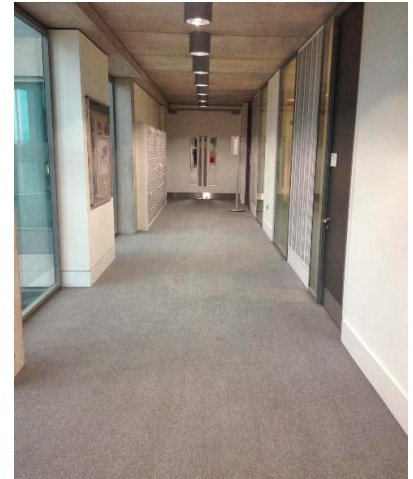
Meeting rooms are situated next-door to each other, making it easier for guests with mobility issues to move between rooms. The corridors are wide enough for easy movement throughout the building.

Accessible toilets

There are accessible toilets on each floor and they are clearly signposted. These toilets are conveniently located at the end of each corridor. Each accessible toilet has an emergency pull cord, fold-down rail, and a soap dispenser and sink in reach of the toilet.

Lifts

All lifts are wheelchair accessible and the controls are at a usable height. There are four sets of lifts located in each Atrium, which means meeting rooms and spaces on higher floors are easy to reach. There is also audio assistance in each lift.



Catering

Our hospitality team cater for a range of dietary requirements and label food accordingly. They are fully trained and on-hand to provide an inclusive service.

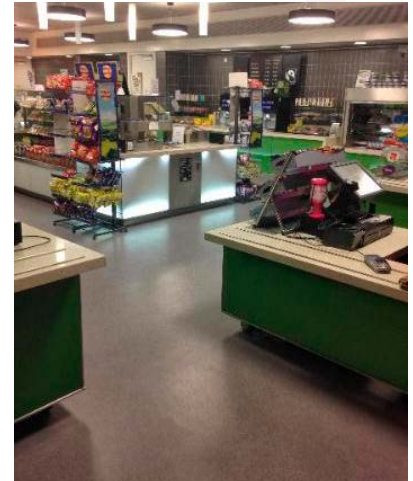
There is a large dining atrium on the ground floor, which is open and accessible. The tables are Equality Act (2010) compliant with flexible options for positioning for ease of access. The main servery area is spacious and accessible for wheelchair users, and the counters are accessible. During busy periods, priority seat signs are available.

Emergency evacuation procedures

Fire evacuation procedures will be provided by the event organiser, please contact them should you require any specific information.

Each stairwell has a secure refuge point for people with access needs, and there is an evacuation chair available in each stairwell that venue staff will use to help evacuate disabled delegates. Any staff using evacuation chairs have had the appropriate training.

Speak to the event organiser prior to attending a conference or event to ensure that we have enough evacuation chairs in place. Visitors with disabilities will be asked to complete Personal Emergency Evacuation Plans in advance of their visit.





**Manchester
Metropolitan
University**